



# IDENTIFYING AND SERVING NATIVE STUDENTS EXPERIENCING HOMELESSNESS



**Monday, April 26, 2:00-2:45PM ET**

# Housekeeping

## HAVE A COMMENT?

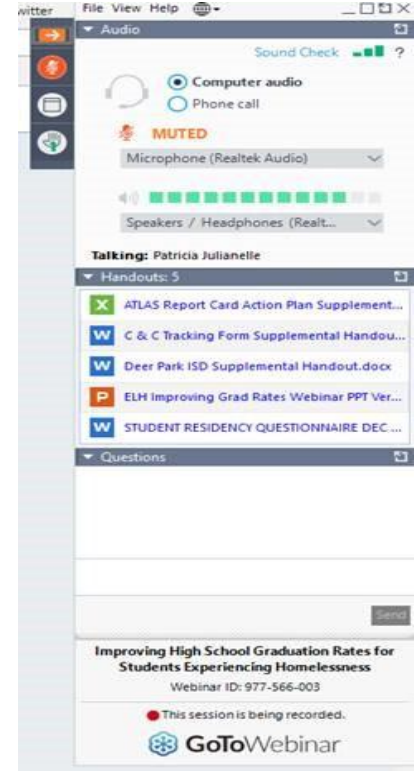
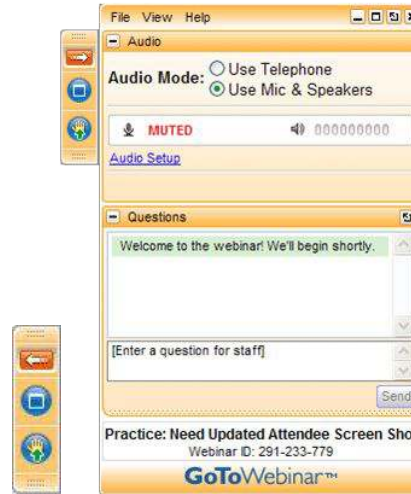
This webinar is for you. Enter your comments/questions in the questions pane and click 'Send'.

## RECORDING & HANDOUTS

An archive of this webinar and all materials will be posted [here](#).

This PowerPoint is available in your "Handouts" panel.

If you've signed up for this webinar, you will receive a link to the recording in an email after the webinar is over.



# About SchoolHouse Connection

SchoolHouse Connection works to overcome homelessness through education. We provide strategic advocacy and practical assistance in partnership with schools, early childhood programs, institutions of higher education, service providers, families, and youth.

- Website:  
<http://www.schoolhouseconnection.org>
- Newsletter:  
<https://www.schoolhouseconnection.org/sign-up/>
- Federal and state policy advocacy
- Q&A from our inbox
- Webinars and implementation tools
- Youth leadership and scholarships



SchoolHouse  
Connection

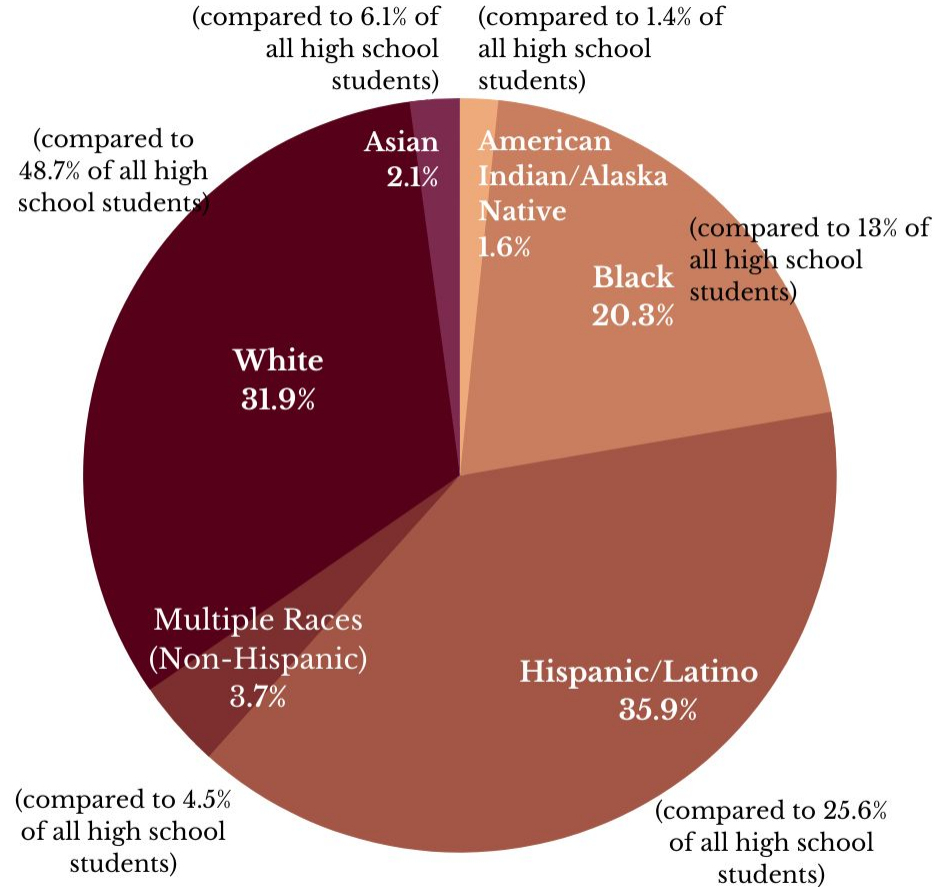
# Presenters

- **Heather Denny**, Title I, Homeless Education, Family and Community Engagement, Montana Office of Public Instruction
- **Nikki Hannon**, Director, Browning Public Schools Parent Community Outreach Program: āisspoōmmoōtsiiyō•p "we help each other", FIT program, BPS Child Care Center, BPS Hi-Set program
- **Erin Patterson**, Director of Education Initiatives, SchoolHouse Connection



# STUDENTS OF COLOR ARE OVER-REPRESENTED AMONG HIGH SCHOOL STUDENTS EXPERIENCING HOMELESSNESS

Data: SchoolHouse Connection's analysis of 2019 YRBS data from 27 states (AK, AR, CA, CO, CT, DE, HI, ID, IL, KS, KY, LA, ME, MD, MI, MT, NH, NM, NC, ND, PA, RI, SC, SD, VT, VA, WI)



# Many States also Collect Data on Student Homelessness by Race



## Washington State



Note: The counts below are based on school-level data and vary from the district-level counts reported annually by OSPI. The OSPI counts can be found by [clicking here](#).

42,599

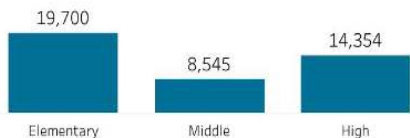
Students Experienced Homelessness

3.5%

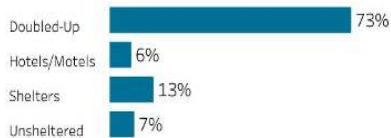
Of All Students Experienced Homelessness

62%

Of Students Experiencing Homelessness Are Students of Color



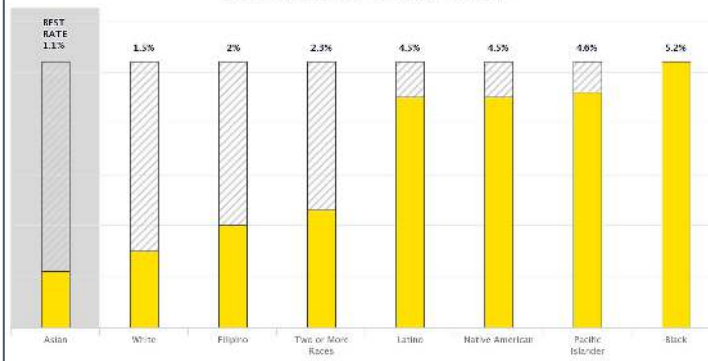
Students Experiencing Homelessness by Grade Band



Nighttime Residence of Students Experiencing Homelessness

## Student Homelessness (%) California

© Advancement Project California: RACE COUNTS, racecounts.org, 2020  
<https://www.racecounts.org/issue/housing/> (accessed April 17, 2020)  
 Data Source: California Department of Education (2018-19)  
 Our Partners: California Calls, USC Dornsife, PICO California



## POVERTY SOLUTIONS UNIVERSITY OF MICHIGAN

Poverty Solutions at the University of Michigan

Working Paper Series

#6-19

October 2019

### No Place Called Home: Student Homelessness Prevalence and Structural Correlate

Michael Evangelist and H. Luke Shaefer  
 University of Michigan

**Questions?**



# Contact

[erin@schoolhouseconnection.org](mailto:erin@schoolhouseconnection.org)

## Resources

- [Student Homelessness: Lessons from the Youth Risk Behavior Survey](#)

## Upcoming Webinars

- May 18th @ 2pm ET: [Planning for Equity: Black Students Experiencing Homelessness in LA County](#)
-