



ENSURING HOMELESS STUDENTS' ACCESS TO MEALS THROUGH P-EBT

Tuesday, April 13 | 2:00-3:00PM Eastern



About SchoolHouse Connection



SchoolHouse Connection works to overcome homelessness through education. We provide strategic advocacy and technical assistance in partnership with schools, early childhood programs, institutions of higher education, service providers, families, and youth.

- Website:
<http://www.schoolhouseconnection.org>
- Newsletter:
<https://www.schoolhouseconnection.org/sign-up/>
- Federal and state policy advocacy
- Q&A from our inbox
- Webinars and implementation tools
- Youth leadership and scholarships

Housekeeping

HAVE A QUESTION?

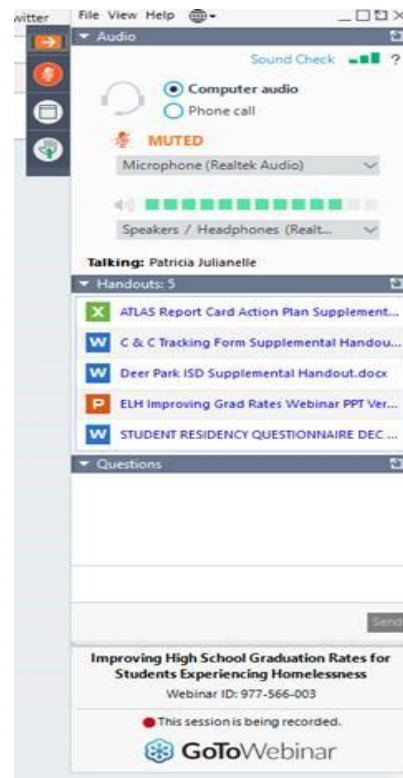
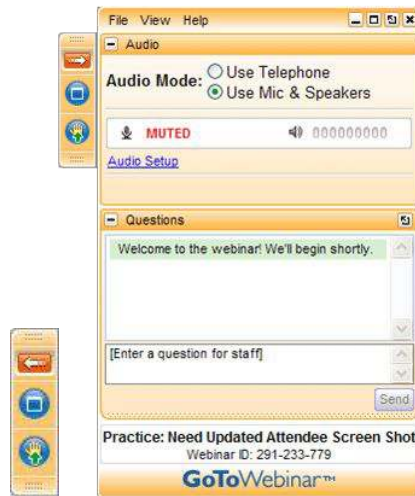
This webinar is for you. Enter your questions in the questions pane and click 'Send'.

RECORDING & HANDOUTS

An archive of this webinar and all materials will be posted [here](#).

This PowerPoint is available in your "Handouts" panel.

If you've signed up for this webinar, you will receive a link to the recording in an email after the webinar is over.



What is Pandemic Electronic Benefit Transfer (P-EBT)?



- Created in March 2020
- Provides an EBT card to purchase food at retailers that accept SNAP (Supplemental Nutrition Assistance Program)
- Designed to provide nutrition resources to families to replace school meals
- Over the spring and summer, all 50 states, D.C. and the Virgin Islands implemented P-EBT for school-aged children

Recent changes to P-EBT

P-EBT was recently extended and expanded to provide benefits to:

- School-aged children for days or hours missed this school year
- Children under the age of six whose households participate in SNAP when school or childcare is closed. Now available in Puerto Rico.



Overview of Benefits and Eligibility

- \$6.82/day
- 32 states P-EBT plans approved for school aged, 9 for Children Under Six
- Eligibility
 - Any student who would receive free or reduced-price meals through the National School Lunch Program (NSLP), if not for a school closure due to COVID-19.

Virtual Learning

- If a child attends school virtually, they are eligible to receive P-EBT benefits.

Hybrid Learning

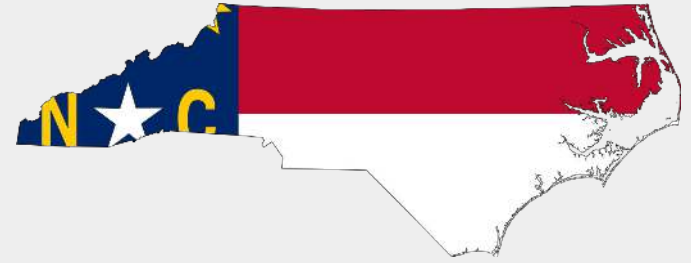
- If a child attends school virtually some days and in-person other days they will be eligible to receive P-EBT benefits for the days they are attending virtually.

Homeschooled Children

- If your child is currently homeschooled they are not eligible

The Importance of P-EBT Outreach

- Students lost access to school meals
- Ensures that those who rely on free and reduced-price lunches are still able to get nutritious meals during **when not in school**
 - Ensuring adequate nutrition for children when schools have been closed and many have been unemployed
- Puts dollars back into the economy via the use of the benefit, providing a stimulus effect



Provides an electronic, cash benefit for students to allow them to purchase food when they are not attending school in a brick and mortar building or receiving meals during the instructional day as part of the National School Lunch Program.



Challenges and Strategies for Reaching Homeless Children and Youth

- National Perspective
- State and Local Perspective

National Perspective

Challenge: Lack of access to internet when applications are required

Strategy: Make applications, F/RP lunch applications, and address changes accessible

Challenge: Inaccessibility to benefits

Strategy: Work with McKinney-Vento homeless liaisons at both a state and local level

Challenge: Lack of awareness

Strategy: share information about the program with homeless families and youth via email, text, and social media.

State/Local Perspective

Issues that had to be addressed and corrected:

- No card received at all, but expecting one
- Unaccompanied homeless youth not receiving a card
- Cards being sent to a parent that does not have custody of a student
- Cards being sent to a deceased parent
- Cards being sent to other family members
- Parent/student not receiving a card even though their name had been submitted to state on each collection
- Attendance not captured accurately (virtual vs. hybrid), which directly affected the amount per month
- Communication issues: DHHS telling parents to contact schools; schools telling parents to contact DHHS.

Recommendations for local liaisons & early childhood partners

- **Track** the distributions of cards
 - P-EBT cards for homeless and migrant students mailed to the address on record for the student at the student's school
- **Attendance**: If the 1R code is not there, then it considers the student as hybrid, not 100% remote. Default in PowerSchool did not indicate 1R, even if the student was 100% remote
- **Document** strategies/challenges, and other issues associated with the P-EBT cards and with recipients
- **Submit a report** of findings to the program specialist
- **Collaborate** with the PSA child nutrition division and the local social service agency to distribute cards, informational literature, and other resources distributed to students, including unaccompanied youth, parents/guardians, school buildings, and local organizations.

Recommendations for local liaisons & early childhood partners

- Utilize information received from involved departments
 - PowerSchool
 - Child Nutrition
 - Accountability
- Didn't receive a card but should have:
 - Verify that information in PowerSchool is accurate
 - Verify that an application was submitted to Child Nutrition for 2020-2021 school year and student was determined eligible for free or reduced meals
 - Verify with Accountability that the student appeared with the correct eligibility code on each EDS submission
- District liaison contacting P-EBT call line to determine next steps
 - P-EBT representatives submitted work tickets for issues that we had verified as accurate at the district/school level.

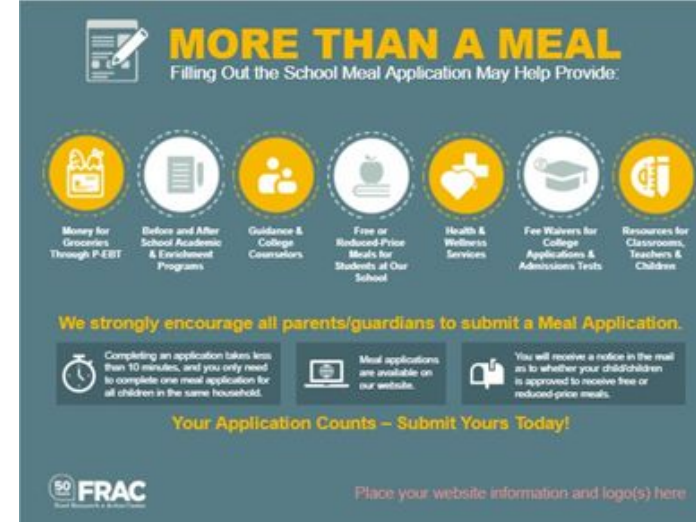
Resources and Outreach Materials



- [Strategies to Ensure States Reach All Eligible Families with P-EBT](#)
- [P-EBT Communications Toolkit](#) (Updated January 2021)
- [FRAC's Customizable P-EBT Outreach Materials](#)
- [FRAC's P-EBT Communications Resources Shared Drive](#) (includes sample outreach materials)

Future Policy Advocacy

- Urge parents to apply for Free/Reduced Price meals
- 2021-2022 Community Eligibility Provision election season
- Healthy Free School Meals for All Campaign



MORE THAN A MEAL
Filling Out the School Meal Application May Help Provide:

- Money for Groceries Through F-EBT
- Before and After School Academic & Enrichment Programs
- Guidance & College Counselors
- Free or Reduced-Price Meals for Students at Our School
- Health & Wellness Services
- Fee Waivers for College Applications & Admissions Tests
- Resources for Classrooms, Teachers & Children

We strongly encourage all parents/guardians to submit a Meal Application.

- Completing an application takes less than 10 minutes, and you only need to complete one meal application for all children in the same household.
- Meal applications are available on our website.
- You will receive a notice in the mail as to whether your child/children is approved to receive free or reduced-price meals.

Your Application Counts – Submit Yours Today!

50 FRAC
Food Recovery Action Center

Place your website information and logo(s) here



PANDEMIC-EBT IS COMING TO [insert state name here] SOON!

Pandemic-EBT (P-EBT) provides money for groceries while schools are closed.

How you can get P-EBT:

- ✓ Complete a school meal application
- ✓ Make sure your school district has your latest address on file

Place website/information/logos here

50 FRAC
Food Recovery Action Center

Questions?